

# Cairns 223

## OPTION 5

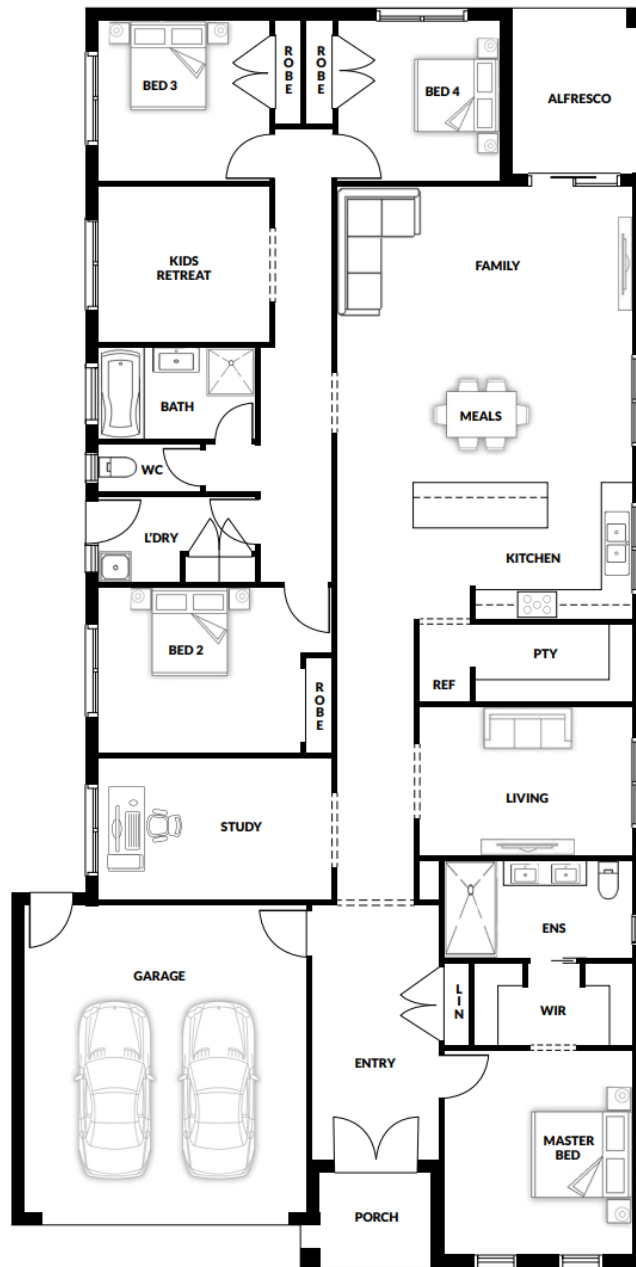
4  3  2  2 

House (width x length): **12.33m x 24.50m**

### DESIGNED TO FIT

Land Min. Lot Width#: **13.53m**

Min. Lot Length#: **31.50m**



### Room Sizes

Master	4.00 x 3.68m	Family/Meals	5.76 x 5.76m
Bed 2	3.24 x 3.95m	Living	2.90 x 4.16m
Bed 3	3.11 x 3.35m	Study	2.75 x 4.55m
Bed 4	3.11 x 3.16m		

### Specifications

Living Area	24.00 sq
Garage	3.90 sq
Porch	0.50 sq
Alfresco	0.90 sq
<b>Total Size</b>	<b>29.30 sq*</b>

This document is for illustration purposes and should be used as a guide only. Illustrations are not to scale. House size and dimensions are based on the relevant standard façade. Sizes and dimensions may vary slightly as per façade selection. # Minimum Lot Sizes May vary due to Council requirements & estate guidelines. Refer to actual working drawings. Quality House & Land does not supply the following items illustrated in this brochure, including furniture, vehicles, etc. This work is exclusively owned by Quality House & Land Pty Ltd and cannot be reproduced or copied either wholly or in part, in any form (graphic, electronic or mechanical, including photocopying and uploading to the internet) without the written permission of Quality House & Land Pty Ltd.



[www.qualityhouses.com.au](http://www.qualityhouses.com.au)