

# HOUSE & LAND PACKAGE



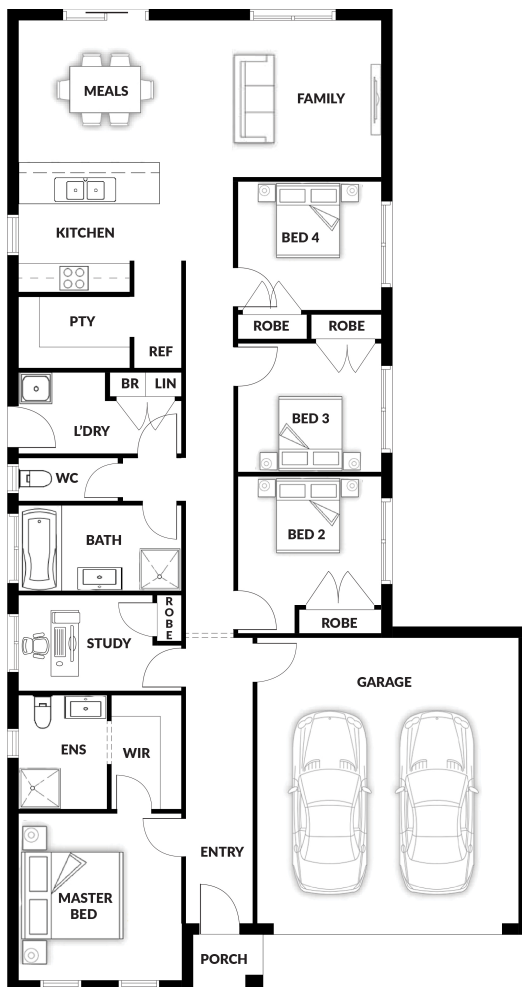
## PACKAGE PRICE

# \$730,000\*

Lot 507 Bootlace Road,  
Officer ( Officer Central  
Estate)

BLOCK 392 m<sup>2</sup> | HOUSE 19.65 sq

## Marion OPT 5



## PACKAGE PRICE INCLUDES:

- ✓ 20mm Stone Benchtop to Kitchen, ENS & Bathroom
- ✓ Soft Close Drawers
- ✓ Bin Drawer
- ✓ All Floor Coverings
- ✓ S/S Appliances
- ✓ Flyscreens
- ✓ Remote Control Garage Door
- ✓ Ask Us About Other Design Options For This Block

[www.qualityhouses.com.au](http://www.qualityhouses.com.au)

\* House and Land Package price correct at time of printing and subject to change without notice. Package price excludes external lighting, telephone services, customer account opening fees, stamp duty on land, legal fees and conveyancing costs including titles and property reports. See our New Homes Guide for full details of the standard inclusions. Standard Facade is included. Land supplied by developer. Land prices and availability are subject to change without notice. All house & land packages are subject to developers approval. Printed Date: 26-04-2525