

# HOUSE & LAND PACKAGE



## PACKAGE PRICE

# \$751,000\*

Lot 324 Tiger Road, Botanic Ridge ( Kingbird Estate)

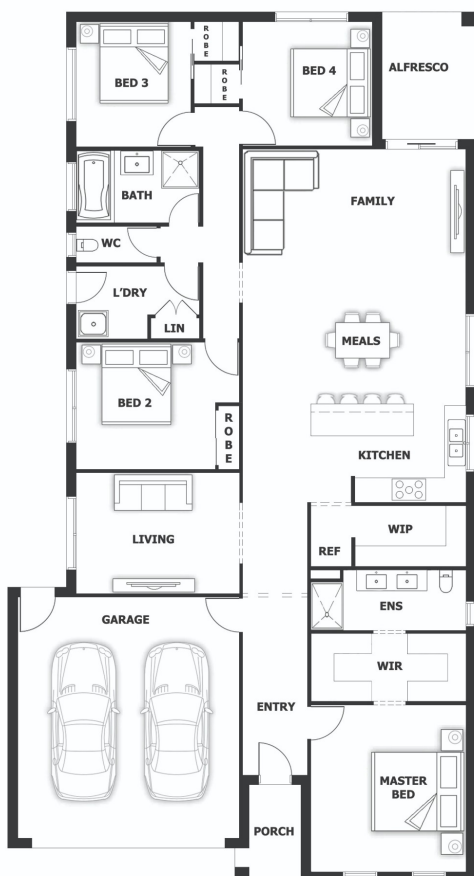
BLOCK 448 m<sup>2</sup> | HOUSE 22.45 sq

## Cairns OPT 2



## PACKAGE PRICE INCLUDES:

- ✓ 40mm Stone Benchtop to Kitchen
- ✓ 900mm S/S Appliances
- ✓ S/S Dishwasher
- ✓ All Floor Coverings
- ✓ 20mm Stone Benchtop to ENS & Bathroom
- ✓ Pot Drawers
- ✓ Soft Close Drawers
- ✓ Flyscreens
- ✓ LED Downlights x 10
- ✓ Remote Control Garage Door
- ✓ Ask Us About Other Design Options For This Block



[www.qualityhouses.com.au](http://www.qualityhouses.com.au)

\* House and Land Package price correct at time of printing and subject to change without notice. Package price excludes external lighting, telephone services, customer account opening fees, stamp duty on land, legal fees and conveyancing costs including titles and property reports. See our New Homes Guide for full details of the standard inclusions. Standard Facade is included. Land supplied by developer. Land prices and availability are subject to change without notice. All house & land packages are subject to developers approval. Printed Date: 26-04-2525