

HOUSE & LAND PACKAGE



PACKAGE PRICE

\$553,000*

Lot 90 Barrier Avenue,
Daylston (Cloverdale
Estate)

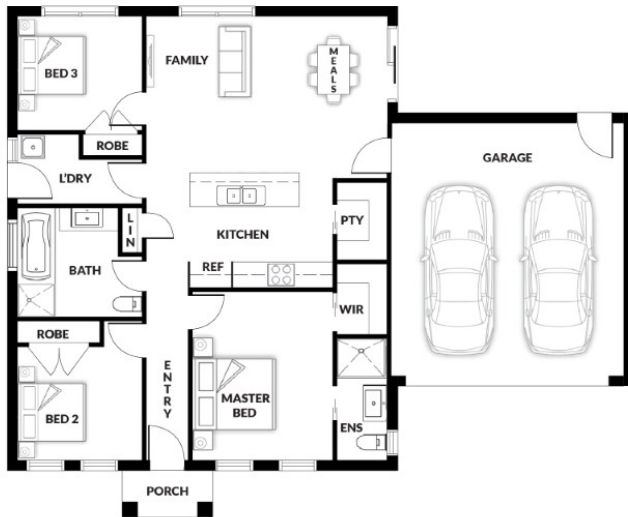
BLOCK 596 m² | HOUSE 15.08 sq

MIA 101



PACKAGE PRICE INCLUDES:

- ✓ Stone Benchtop
- ✓ All Floor Coverings
- ✓ S/S Appliances
- ✓ Fibre Optics
- ✓ Site Cost up to M-Class Slab
- ✓ Remote Garage Door
- ✓ Flyscreens
- ✓ Hand Held Showers
- ✓ 7 Star Energy Rating
- ✓ NCC - Accessible & Inclusive Living
- ✓ 3.5KW Solar Panels Installed
- ✓ Tiled Shower Base
- ✓ Stone Benchtops
- ✓ All Floor Coverings



SYED ASKAR 0404 041 655

www.qualityhouses.com.au

* House and Land Package price correct at time of printing and subject to change without notice. Package price excludes external lighting, telephone services, customer account opening fees, stamp duty on land, legal fees and conveyancing costs including titles and property reports. See our New Homes Guide for full details of the standard inclusions. Standard Facade is included. Land supplied by developer. Land prices and availability are subject to change without notice. All house & land packages are subject to developers approval. Printed Date: 05-06-2626