

HOUSE & LAND PACKAGE



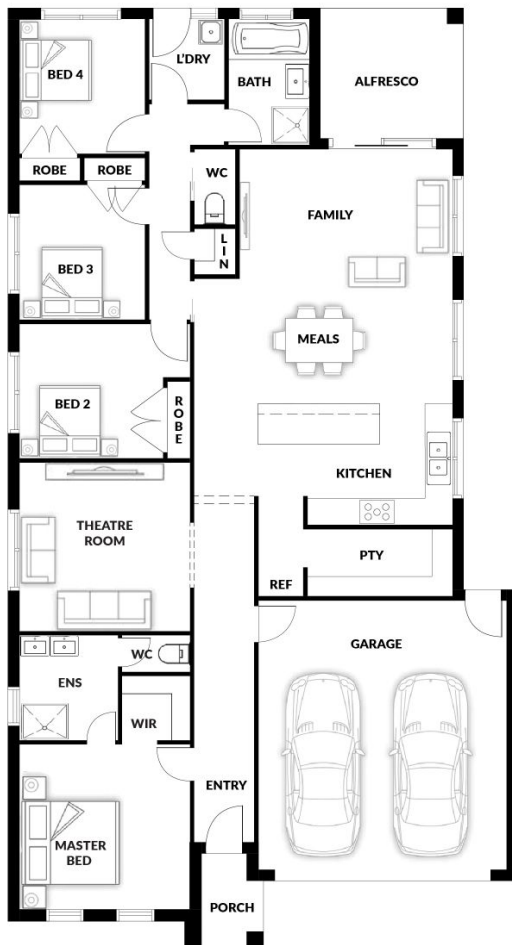
PACKAGE PRICE

\$619,000*

Lot 264 Harbinger Street,
Warragul (Copelands
Estate)

BLOCK 636 m² | HOUSE 22.58 sq

Bondi 161 WIP



PACKAGE PRICE INCLUDES:

- ✓ Stone Benchtop
- ✓ All Floor Coverings
- ✓ S/S Appliances
- ✓ Fibre Optics
- ✓ Site Cost up to M-Class Slab
- ✓ Remote Garage Door
- ✓ Flyscreens
- ✓ Hand Held Showers

CRAIG WARD 0409 695 188

www.qualityhouses.com.au

* House and Land Package price correct at time of printing and subject to change without notice. Package price excludes external lighting, telephone services, customer account opening fees, stamp duty on land, legal fees and conveyancing costs including titles and property reports. See our New Homes Guide for full details of the standard inclusions. Standard Facade is included. Land supplied by developer. Land prices and availability are subject to change without notice. All house & land packages are subject to developers approval. Printed Date: 23-11-2424